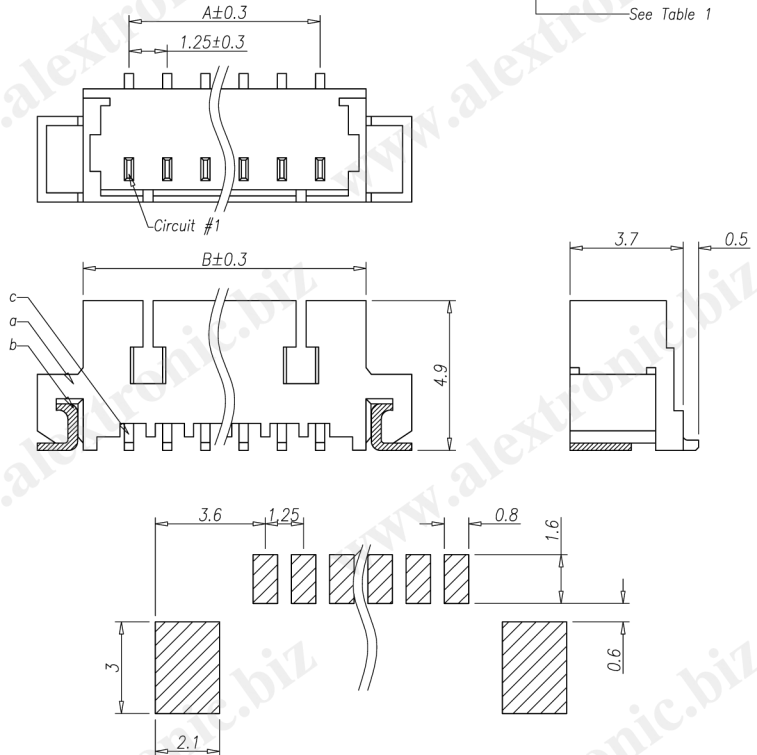


CATEGORY	DESCRIPTION	P/N #
CONNECTOR	Wafer Wire 180° SMT Type	WB253V-XX060-0940

WB253V-XX060-0940

See Table 1



Recommend PCB Layout  
(Jack Top View)  
Tolerance: ±0.05mm

See Table 1

c	Terminal	XX	Phosphor Bronze, T=0.3mm	Matte Tin Plating	
b	Solder	2	Brass, T=0.25mm	Matte Tin Plating	
a	Housing	1	PA UL94V-0	White	
NO.	PART NAME	Q'TY	MATERIAL	PLATING & COLOR	Remark

REV.	ECN NO	DESCRIPTION	REVISED	DATE
A01		New Release	Luguan	2009.07.13

SPECIFICATION

1. CURRENT RATING : 3 Amp MAX.
2. WITHSTANDING VOLTAGE : AC 800V MIN.
3. INSULATION RESISTANCE: 1000MQ MIN.
4. OPERATING TEMPERATURE : -40° C TO +105° C

Table 1:  
Pin Q'TY & Dimension

Q'TY	Dimension	
XX	A	B
02	1.25	4.25
03	2.50	5.50
04	3.75	6.75
05	5.00	8.00
06	6.25	9.25
07	7.50	10.50
08	8.75	11.75
09	10.00	13.00
10	11.25	14.25
11	12.50	15.50
12	13.75	16.75
13	15.00	18.00
14	16.25	19.25
15	17.50	20.50

Product Drawing  
ALETRONIC

UNLESS OTHERWISE SPECIFIED TOLERANCES	SCALE: free	UNIT: mm	⊕ ⊖	DWG.NO:
DECIMALS: X : ±0.5 X.X : ±0.3 X.XX : ±0.2	SIZE: A3	PAGE: 1 OF 1	REV: A01	WI-061-492
ANGLES: X : ±2° X.X : ±1'	APPROVED BY	CHECKED BY	PREPARED BY	
	WYX	Pengjie	Luguan	
<b>CUSTOMER COPY</b>				